



# CONTENTS

## Roller Chain & Belt Tighteners

|                              |    |
|------------------------------|----|
| Introduction .....           | 78 |
| IdleMaster® Tighteners ..... | 79 |
| Snugulator® Tighteners ..... | 83 |
| Where to Use Chart.....      | 85 |



Quality **BLACK HCE** Parts



# INTRODUCTION

**Roller Chain  
And Belt Tighteners  
Reduce Noise And  
Increase Life Of Chains  
And Belts.**

## **Black Ace® Idle Master®**

- Used In Place Of Idler Sprockets
- High RPM Bearings
- Precision-made From Long-lasting Steel
- Heat Treated Versions Available
- Not Sensitive To Pitch Variances Of The Roller Chain
- Increase Roller Chain Life Dramatically
- Belt Style Is Precision One Piece For High RPM
- Design And Production For Custom Applications

## **Black Ace® Snugulator®**

- Used In Place Of Idler Sprockets
- High RPM Bearings
- Has Long Life
- Reduces Chain Whipping
- Reduces Noise And Vibration
- Makes Machinery Run Smoother
- Not Sensitive To Pitch Variances
- Maintains Proper Tension & Avoids Unneeded Idler Sprocket Engagement, Improving Roller Chain Life



# Idle Master® Tighteners

- Long Lasting
- All Steel
- Smooth Running



**Idle Master® Tightener**  
With Single BGBH Bearing

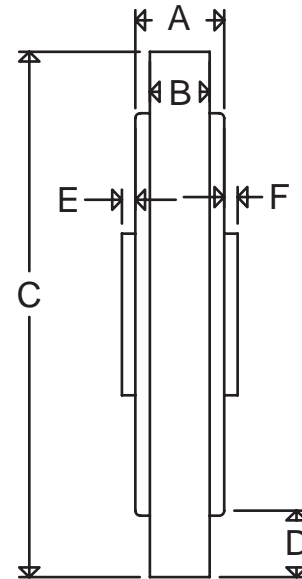


Figure 79A

\*See page 85 for Applications

## Idle Master® Idlers for Roller Chains

ALL DIMENSIONS IN INCHES

| Item #  | A   | B   | C    | D   | E    | F    | Bolt Holes    | Roller Chain |
|---------|-----|-----|------|-----|------|------|---------------|--------------|
| 2641BE  | .55 | .29 | 2.50 | .22 | .08  | .08  | 3/8, 1/2, 5/8 | #40          |
| 2651BE  | .55 | .37 | 3.15 | .41 | .08  | .08  | 3/8, 1/2, 5/8 | #50          |
| 2661BE  | .55 | .49 | 3.15 | .41 | .08  | .08  | 3/8, 1/2, 5/8 | #60          |
| 2681BC3 | .67 | .58 | 3.34 | .38 | -.04 | -.04 | 1/2, 5/8, 3/4 | #80          |



**Idle Master® Tightener**

- With BGA and BGBH Bearings
- Heat Treated Steel

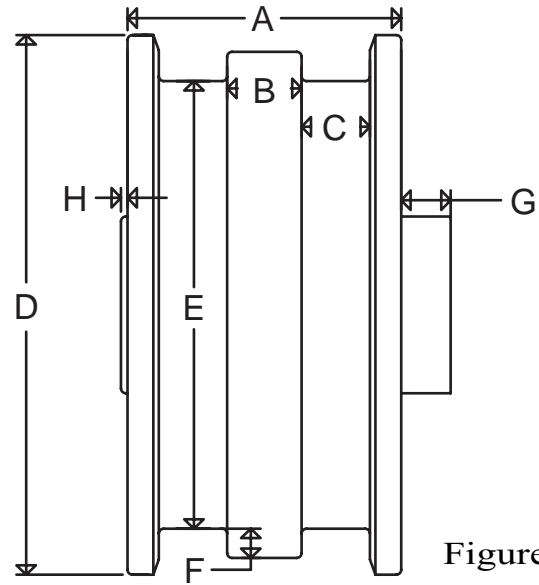


Figure 80A

\*See page 85 for Applications

**Idle Master® Idlers for Roller Chains**

ALL DIMENSIONS IN INCHES

| Item# | A    | B    | C   | D    | E    | F   | G   | H   | Bolt Hole     | Roller Chain |
|-------|------|------|-----|------|------|-----|-----|-----|---------------|--------------|
| 2840  | .85  | .29  | .19 | 2.70 | 2.30 | .10 | .07 | .07 | 3/8, 5/8, 1/2 | #40          |
| 2856  | 1.55 | .37  | .39 | 3.45 | 3.24 | .19 | .04 | .04 | 3/8, 5/8, 1/2 | #50 & # 60   |
| 2868* | 1.75 | .475 | .44 | 3.45 | 3.24 | .19 | .31 | .04 | 3/8, 5/8, 1/2 | #60 & #80    |

\*Denotes Double Bearing And Adapts To Heavy Roller Chain



**2662BDE2**

- Made for Double 60 Roller Chain
- Double BGA Bearings
- Heat Treated Steel
- Available in 1/2, 5/8, 3/4" Bolt Hole Sizes

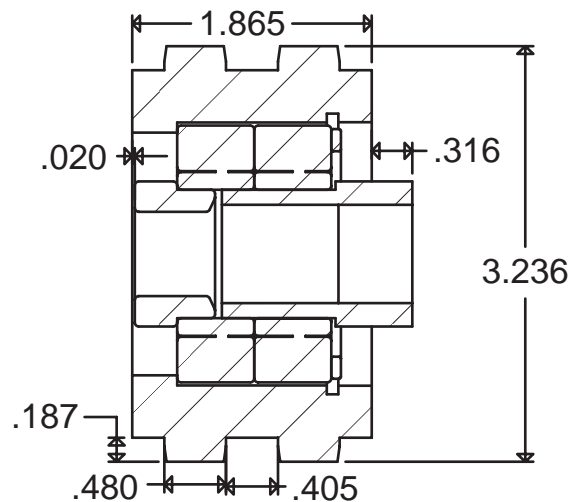


Figure 80B

\*See page 85 for Applications





### Idle Master® Tighteners for Belts

- Precision Machined Steel
- High Speed Bearings
- For High Loads and Durability

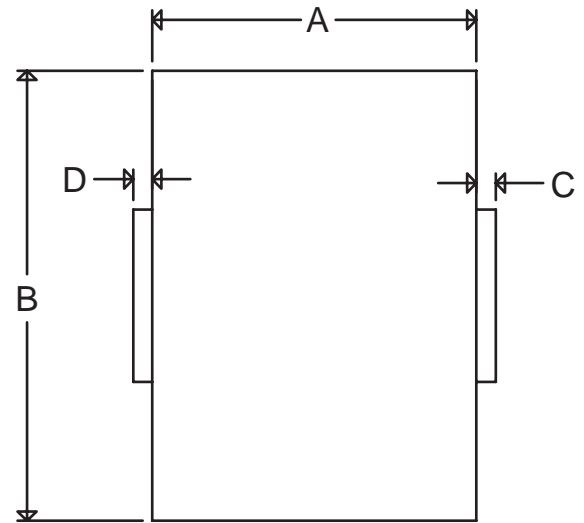


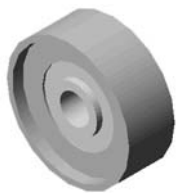
Figure 81A

### Idle Masters® For Belts

ALL DIMENSIONS IN INCHES

| Item #   | A    | B    | C   | D     | Bolt Holes    |
|----------|------|------|-----|-------|---------------|
| 2632BD3  | 2.12 | 2.95 | .13 | -.144 | 1/2, 5/8, 3/4 |
| 26303BH3 | 3.00 | 3.00 | .02 | .132  | 3/4           |
| 2625BG3  | 4.12 | 2.50 | .31 | .01   | 3/4           |
| 26306BI3 | 6.00 | 3.00 | .13 | .0    | 3/4           |

Chart 81D



### 2012BE

- Available in 3/8, 1/2, 5/8” Bolt Hole Sizes

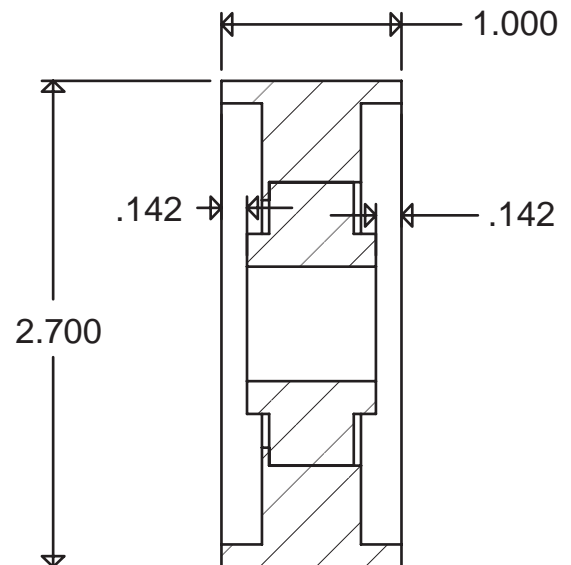


Figure 81B

\*See page 85 for Applications





**2042BD3**

- For B Width V-Belts
- Available in 1/2, 5/8, 3/4” Bolt Hole Sizes

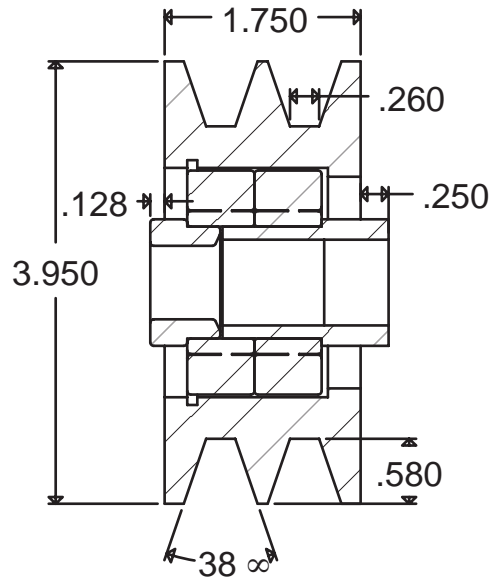


Figure 82A

\*See page 85 for Applications



**2011ABE3**

- Available in 1/2, 5/8, 3/4” Bolt Hole Sizes

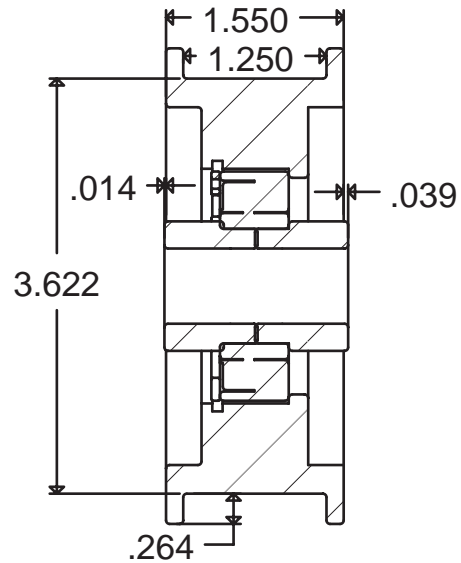


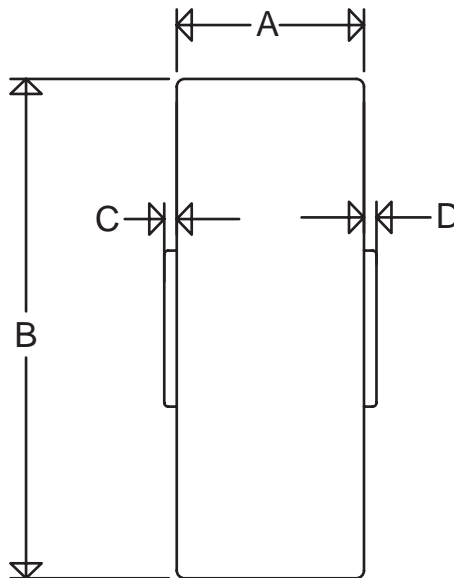
Figure 82B

\*See page 85 for Applications



## Snugulator® Tighteners

- Quiet
- Long Lasting
- Designed for Belt & Roller Chain Applications
- Many Uses
- All Snugulators® Have High Speed Bearings
- Smooth Running



\*See page 85 for Applications

Figure 83A

## Snugulator®

ALL DIMENSIONS IN INCHES

| Item #    | A     | B    | C   | D    | Bolt Hole     | Bushing |
|-----------|-------|------|-----|------|---------------|---------|
| 2075CA    | .750  | 2.00 | .05 | .05  | 5/16          | No      |
| 2555CD1   | 2.240 | 2.50 | .25 | .25  | 3/8, 1/2, 5/8 | Yes     |
| 2550BE3   | 1.375 | 3.50 | .16 | .09  | 1/2, 5/8, 3/4 | Yes     |
| 2500BD3   | 2.125 | 3.50 | .12 | -.14 | 1/2, 5/8, 3/4 | Yes     |
| 2755D2CB2 | 1.000 | 2.75 | .87 | .87  | 3/8, 1/2, 5/8 | Yes     |
| 2755CB2   | 1.000 | 2.75 | .63 | .63  | 3/8, 1/2, 5/8 | Yes     |

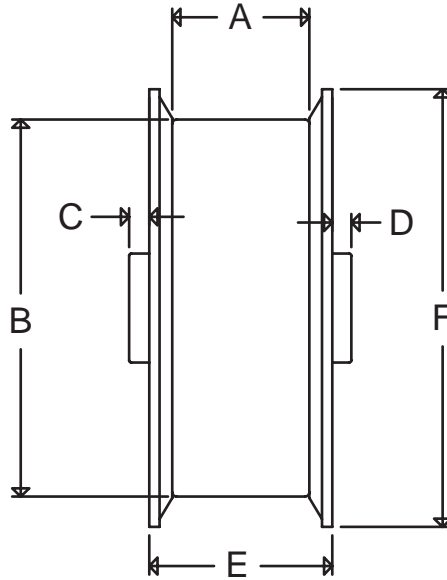


Figure 84A

\*See page 85 for Applications

## Flanged Snugulators®

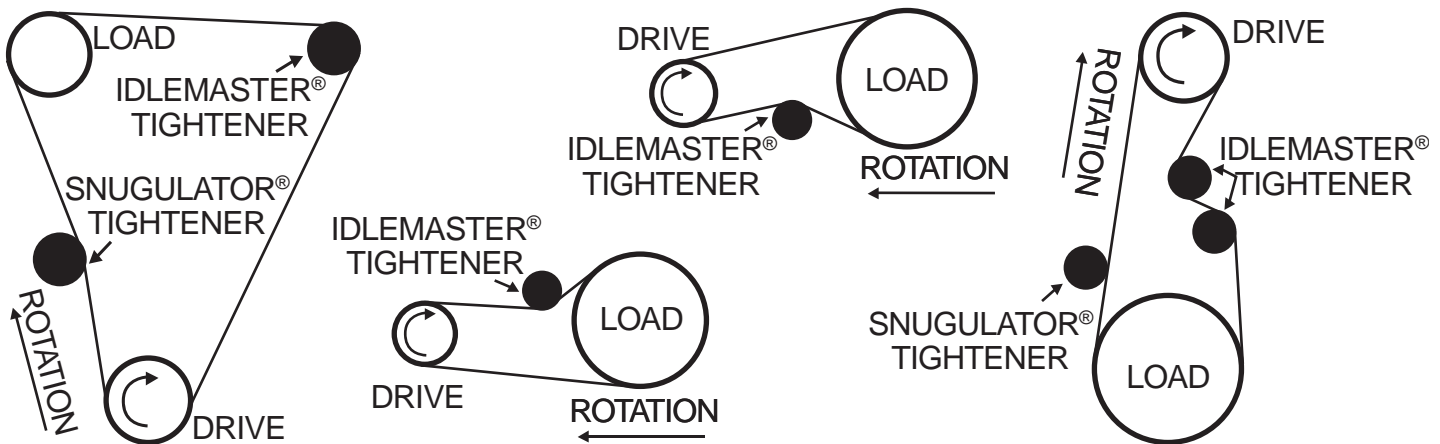
ALL DIMENSIONS IN INCHES

| Item #   | A    | B    | C    | D    | E     | F    | Bolt Hole     | Bushings |
|----------|------|------|------|------|-------|------|---------------|----------|
| 2755FCB2 | 1.00 | 2.75 | .50  | .50  | 1.31  | 3.25 | 3/8, 1/2, 5/8 | Yes      |
| 2550FBE3 | 1.37 | 3.50 | .02  | -.04 | 1.68  | 3.97 | 1/2, 5/8, 3/4 | Yes      |
| 2500FBD3 | 2.12 | 3.50 | -.01 | -.27 | 2.413 | 3.97 | 1/2, 5/8, 3/4 | Yes      |



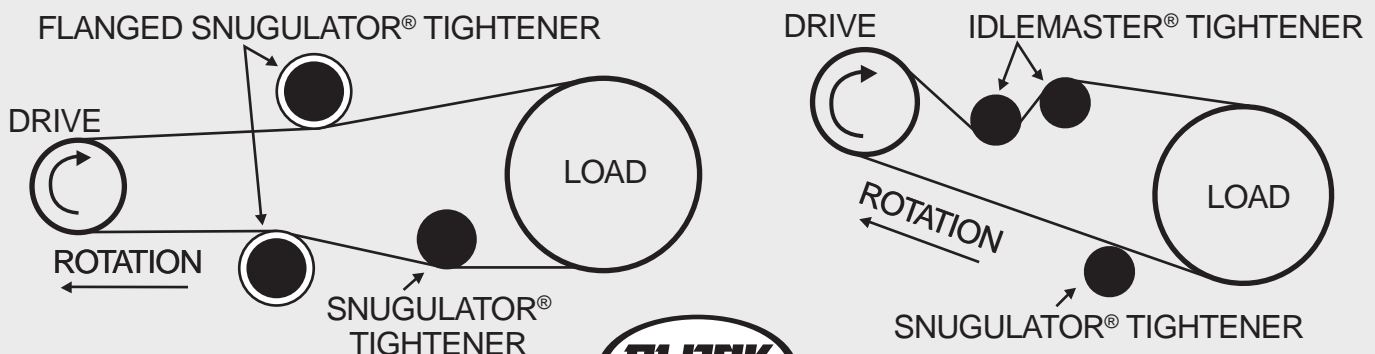
## IdleMaster® Tightener Applications

- The IdleMaster® Tightener is used on load bearing area.
- IdleMaster® Tighteners are designed for use in areas with wrap of more than 25 degrees.
- The IdleMaster® Tightener minimizes surging of chain.
- The IdleMaster® Tightener increases chain life, and improves overall performance.



## Snugulator® Tightener Applications

- The Snugulator® is usually used on the slack side of the roller chain drive and used on the tensioned side with very little deflection.
- Snugulator® Tighteners are available with and without flanges. Use a flanged Snugulator® for longer span chains and belts.
- The Snugulator® should be placed a proper distance from the sprocket for minimum pressure.
- Unlike many idler sprockets, the Snugulator® Tightener lasts a long time and is not sensitive to chain wear. Both new and worn chain can safely run on the same Snugulator®.







## To Order Black Ace® Parts

Please use our fax #  
218-478-3622  
or call  
800-423-3918.

**We encourage fax orders.**

Please do not email orders at this time. We are currently developing an online ordering system, and we will contact you when it is available.

When ordering custom-made-to-order parts we require that you sign a print or sketch to ensure that you get the correct parts.

Your order will be acknowledged by fax upon request.

For your convenience you may copy and use the order form on the back side of this page.

Thank you in advance for your order.

